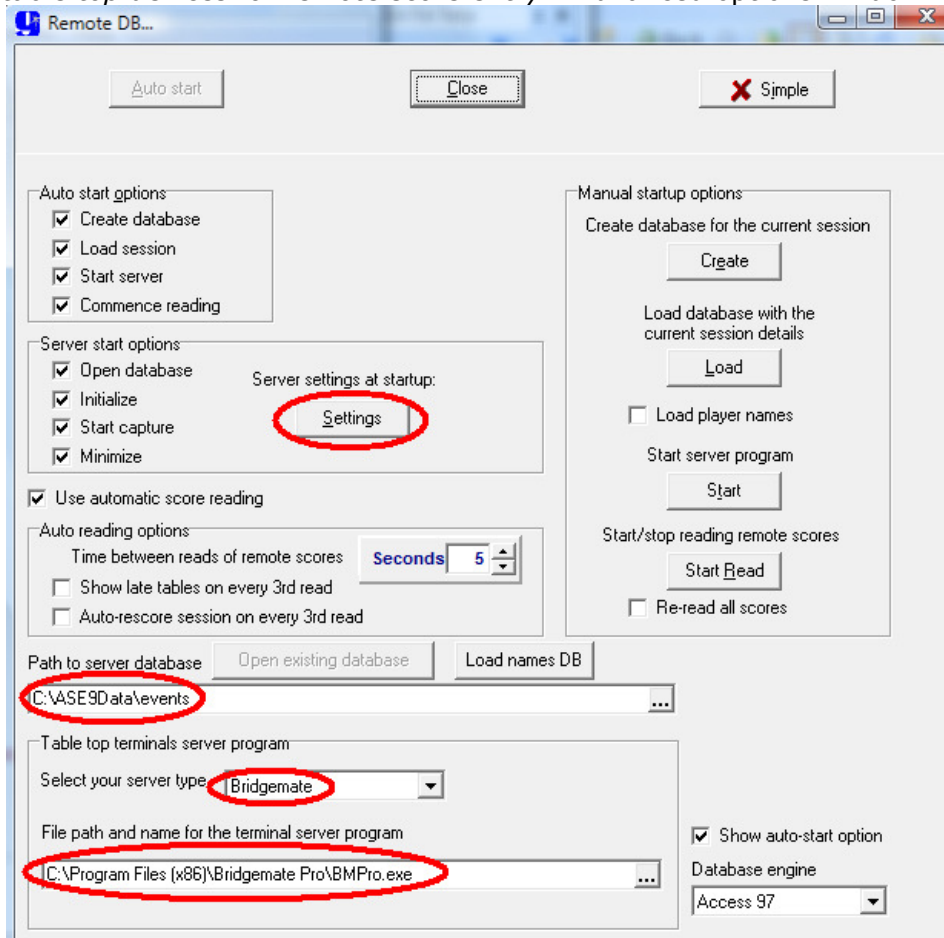


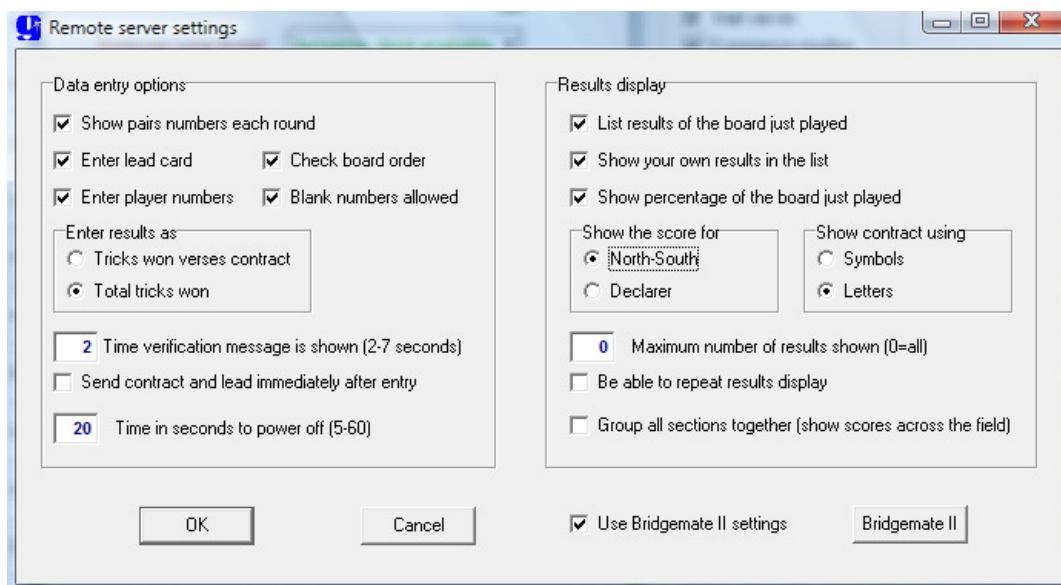
## Configuration of scoring program ASE9

### In ASE9 (Open ASE9 and select **Club F3** and choose **4Options**)

1. Tick "Use table top devices for remote score entry": Advanced options window will open

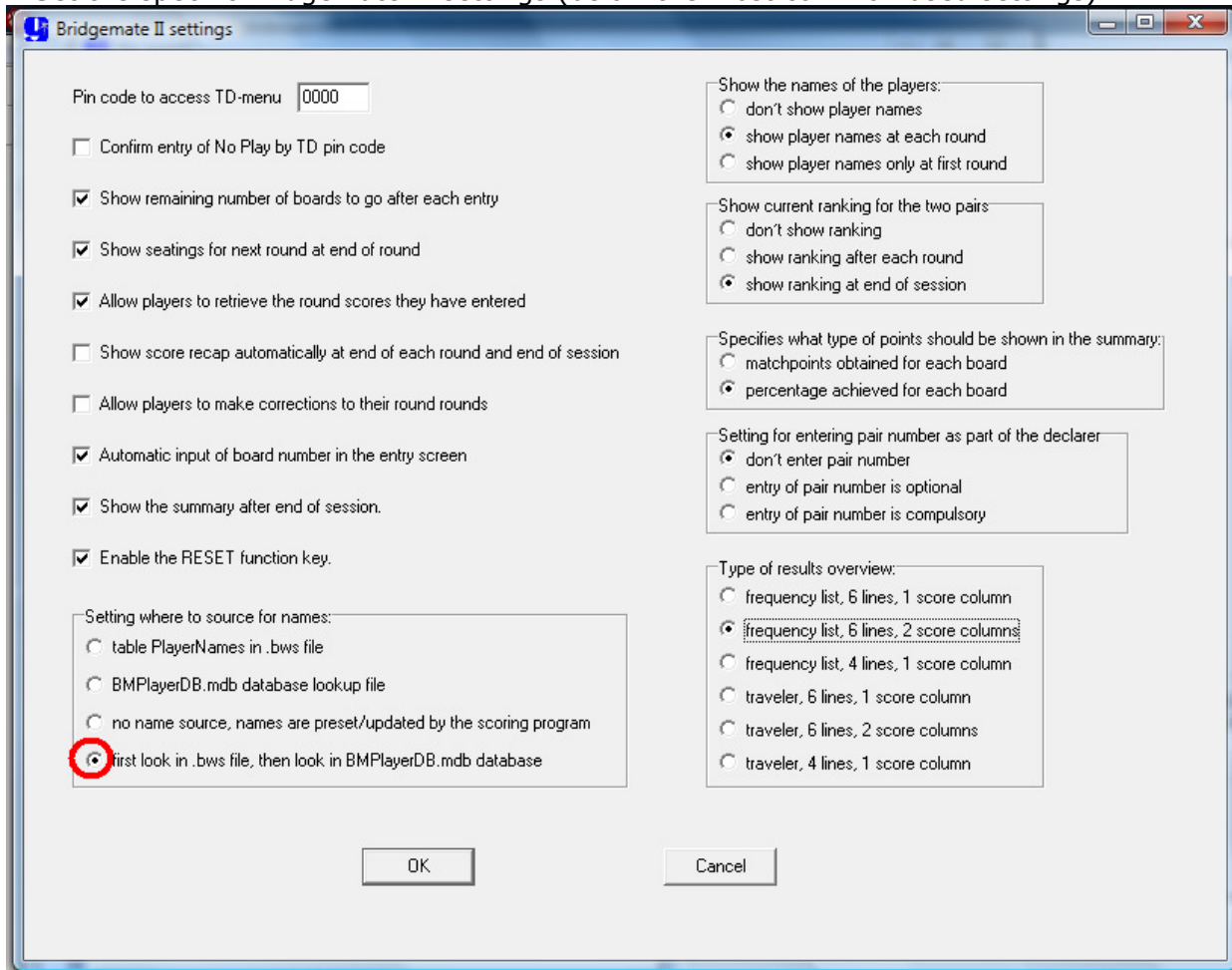


2. Path to server database: Browse [...] to the directory where the bws files will be stored
3. Your type of server [select Bridgmate]
4. File path and name for the server program: Browse [...] to:
  - On a **64 bits** operating system C:\Program Files (x86)\Bridgmate Pro\BMPro.exe
  - On a **32 bits** operating system C:\Program Files\Bridgmate Pro\BMPro.exe
5. Click on Server settings at start up
6. Set the general options (below the most common used settings)



7. Tick Use Bridgmate II settings
8. Click on button Bridgmate II

9. Set the specific Bridgemate II settings (below the most common used settings)

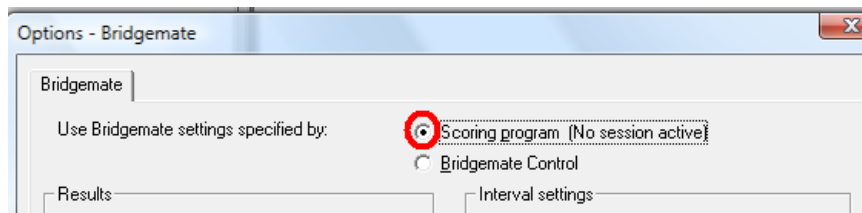


**In Windows Explorer:**

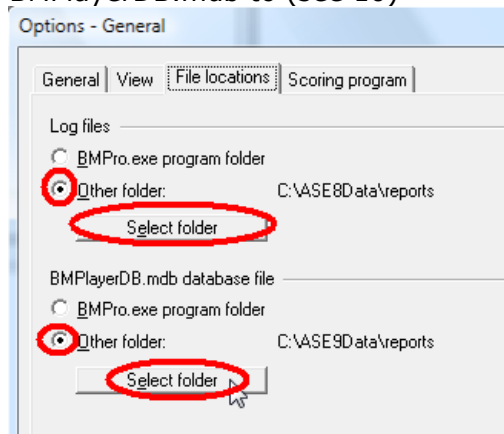
10. Copy BMPlayerDB.mdb from Program Files to a writable directory

**In Bridgemate Control Software**

11. Go to Tools > Options > **Bridgemate** > Use Bridgemate settings specified by [*tick Scoring program*]



12. Go to Tools > Options > **General** > File locations (tab) and set the path to directory where you've copied the BMPlayerDB.mdb to (see 10)

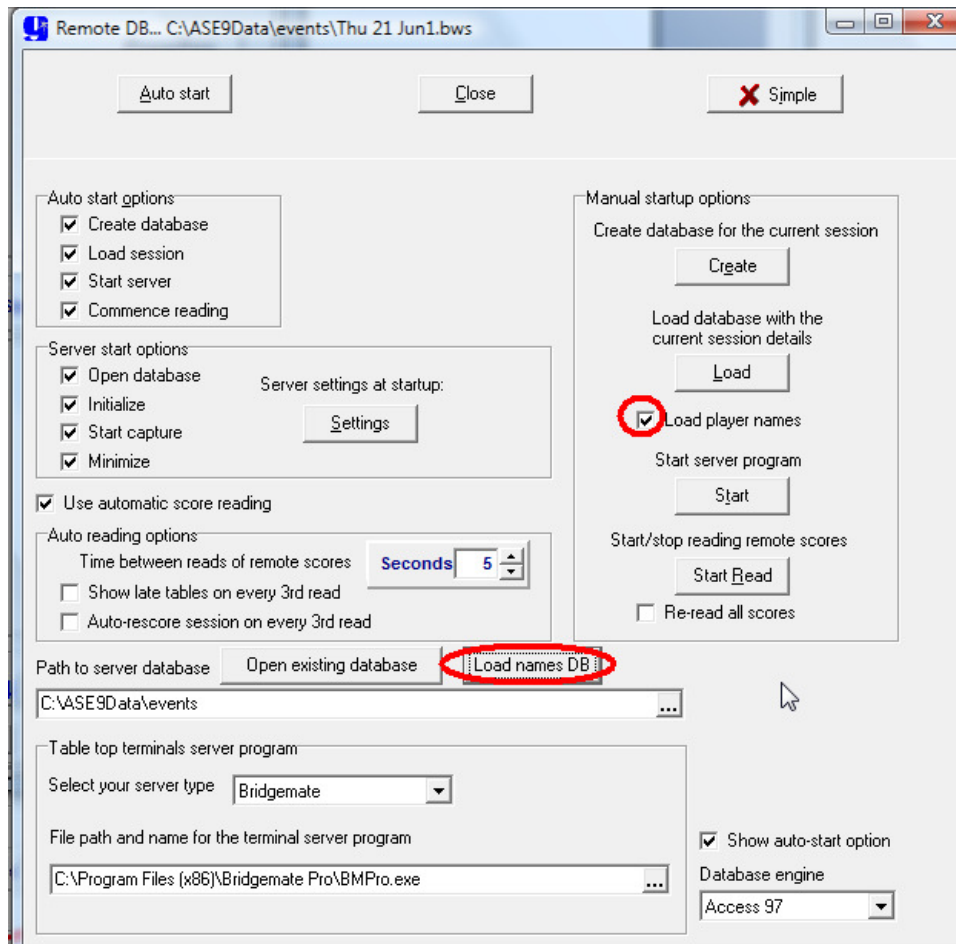
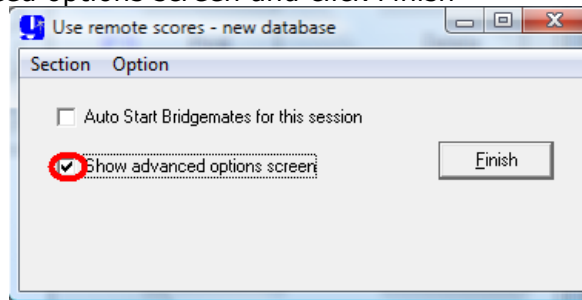


13. Close Bridgemate Control Software and close ASE9

## Your first session:

### In ASE9:

- Set up your session as normal
- Select Show advanced options screen and click Finish



- Click on Load names DB (if you want to use the BMPlayerDB.mdb)
- Tick Load player names (if you want to use the bws result file as source)
- Click Auto start

This was a once of exercise:

Bridgeman and ASE9 will remember these setting every next session.